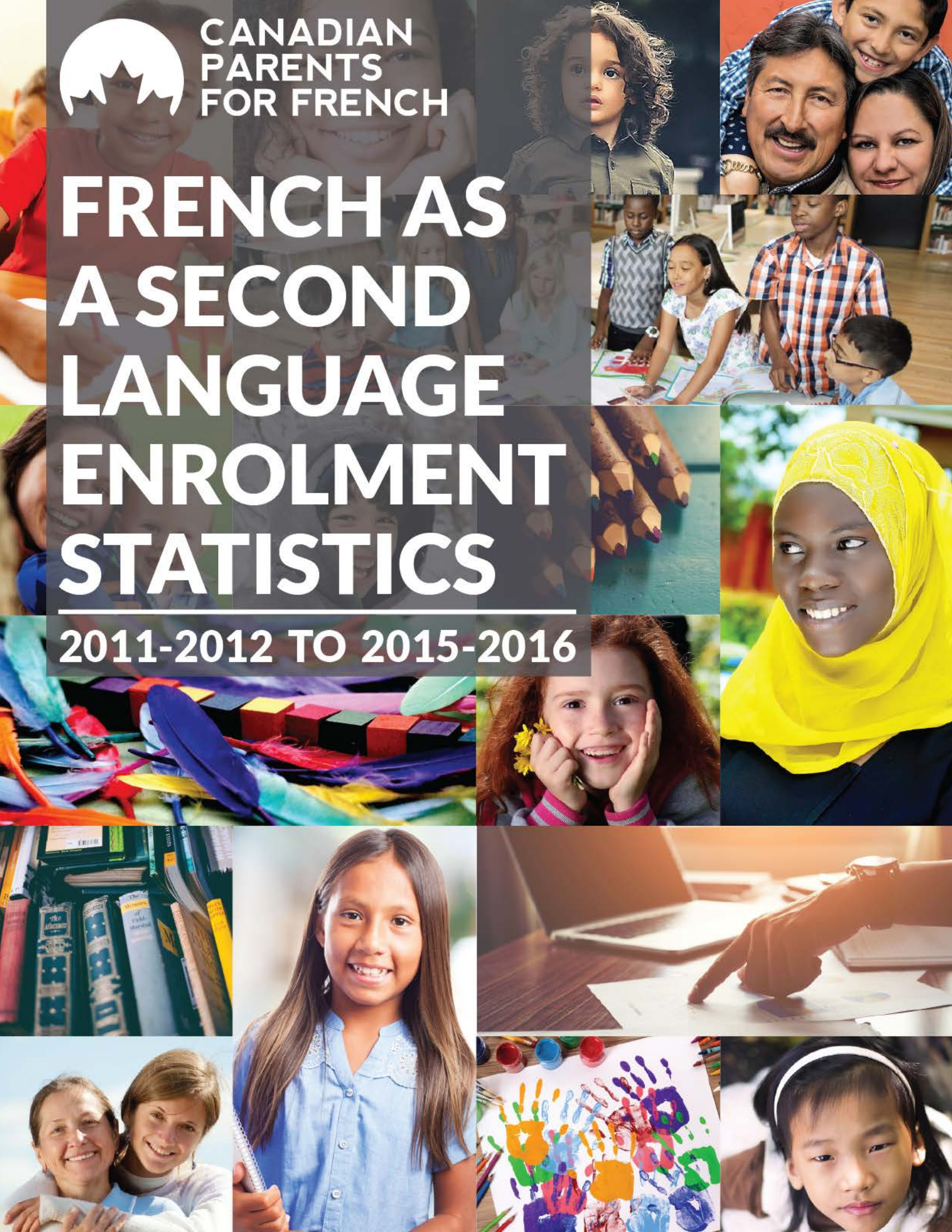




CANADIAN  
PARENTS  
FOR FRENCH

# FRENCH AS A SECOND LANGUAGE ENROLMENT STATISTICS

2011-2012 TO 2015-2016



# NATIONAL FRENCH-SECOND-LANGUAGE ENROLMENT BY PROVINCE, GRADE AND PROGRAM

Source: Provincial and Territorial Ministries of Education

Province/Territory	Year	% FSL <sup>1</sup>	% French Immersion <sup>2</sup>	% Core French <sup>3</sup>	Total in FSL Programs	Total in French Immersion	Total in Core French	Total Eligible Students
Alberta	2015-2016	29.3	6.8	22.6	183,966	42,438	141,528	627,173
	2014-2015	30.4	6.7	23.7	186,409	41,225	145,184	613,122
	2013-2014	30.6	6.6	24.0	187,512	40,476	147,036	613,122
	2012-2013	32.3	6.7	25.6	184,600	38,245	146,355	571,051
	2011-2012	32.7	6.6	26.1	181,852	36,753	145,099	555,554
British Columbia	2015-2016	41.2	9.6	31.6	225,548	52,535	173,013	547,844
	2014-2015	41.2	9.2	32.0	225,678	50,307	175,371	547,382
	2013-2014	40.7	9.0	31.8	224,822	49,451	175,371	552,313
	2012-2013	40.5	8.5	31.9	226,651	47,849	178,802	559,788
	2011-2012	39.8	8.2	32.4	229,554	46,388	183,166	565,138
Manitoba	2015-2016	45.7	13.6	32.2	82,154	24,381	57,773	179,659
	2014-2015	45.7	12.9	32.9	80,729	22,725	58,004	176,543
	2013-2014	46.0	12.6	33.5	81,025	22,106	58,919	175,968
	2012-2013	46.5	12.0	34.5	81,976	21,214	60,762	176,337
	2011-2012	46.6	11.6	35.0	82,076	20,490	61,586	176,076
New Brunswick	2015-2016	85.8	28.5	57.7	60,061	19,710	40,351	69,972
	2014-2015	86.4	27.2	59.1	60,449	19,064	41,385	69,972
	2013-2014	85.3	26.1	59.2	60,526	18,498	42,028	70,935
	2012-2013	84.9	25.2	59.7	61,065	18,111	42,954	71,955
	2011-2012	84.3	24.2	60.1	61,625	17,680	43,945	73,124
Newfoundland & Labrador	2015-2016	60.6	15.3	45.3	40,289	10,186	30,103	66,455
	2014-2015	61.4	15.2	46.2	41,129	10,190	30,939	66,935
	2013-2014	58.9	14.4	44.5	39,514	9,681	29,833	67,080
	2012-2013	58.6	13.6	45.0	39,405	9,118	30,287	67,256
	2011-2012	59.9	13.3	46.6	40,520	9,003	31,517	67,627
Nova Scotia	2015-2016	52.5	13.3	39.2	59,175	15,016	44,159	112,686
	2014-2015	52.7	13.4	39.3	60,111	15,248	44,863	114,143
	2013-2014 <sup>4</sup>							
	2012-2013	52.8	13.0	38.2	62,393	15,310	47,083	118,212
	2011-2012	52.4	12.6	39.7	63,297	15,275	48,022	120,769
Northwest Territories	2015-2016	31.1	10.2	20.9	2,538	833	1,705	8,153
	2014-2015	31.0	9.7	21.3	2,512	783	1,729	8,102
	2013-2014	31.2	9.1	22.1	2,494	726	1,768	7,984
	2012-2013	30.6	8.5	22.1	2,506	698	1,808	8,179
	2011-2012	29.2	8.1	21.1	2,422	674	1,748	8,293
Nunavut <sup>5</sup>	2015-2016	1.7		1.7	147		147	8,611
	2014-2015	2.1		2.1	125		125	8,550
	2013-2014	2.1		2.1	103		103	8,150
	2012-2013	1.4		1.4	133		133	9,648
	2011-2012	1.9		1.9	161		161	8,438

Province/Territory	Year	% FSL <sup>1</sup>	% French Immersion <sup>2</sup>	% Core French <sup>3</sup>	Total in FSL Programs	Total in French Immersion	Total in Core French	Total Eligible Students
Ontario	2015-2016	51.8	11.3	40.6	979,269	212,714	766,555	1,889,940
	2014-2015	51.4	10.5	40.9	978,091	200,258	777,833	1,901,399
	2013-2014	51.1	9.8	41.6	984,628	187,741	796,887	1,914,844
	2012-2013	50.3	9.1	41.3	972,208	174,895	797,313	1,932,498
	2011-2012	50.1	8.5	41.6	975,935	164,635	811,300	1,946,437
Prince Edward Island	2015-2016	59.55	25.5	34.0	11,220	4,806	6,414	18,842
	2014-2015	58.6	24.4	34.1	11,194	4,672	6,522	19,113
	2013-2014	57.7	23.2	34.5	11,139	4,482	6,657	19,317
	2012-2013	54.0	22.5	33.8	11,018	4,391	6,627	19,577
	2011-2012	53.5	21.7	34.1	11,150	4,340	6,810	19,977
Quebec	2015-2016	100.0	32.0	68.0	97,277	31,098	66,179	97,277
	2014-2015	100.0	31.8	68.2	97,997	31,177	66,820	97,997
	2013-2014	100.0	31.7	68.3	99,450.0	31,560	67,890	99,450
	2012-2013	100.0	36.5	64.4	100,812	36,489	64,323	99,850
	2011-2012	100.0	36.2	64.3	103,027	37,074	65,953	102,491
Saskatchewan <sup>6</sup>	2015-2016	28.8	7.9	20.8	50,291	13,868	36,423	174,698
	2014-2015	28.8	7.6	21.2	49,430	13,007	36,423	171,678
	2013-2014	27.5	7.4	20.1	45,885	12,319	33,566	167,026
	2012-2013	28.3	6.9	21.5	47,338	11,518	35,820	166,982
	2011-2012	29.8	6.7	25.6	48,973	11,004	37,969	164,579
Yukon	2015-2016	49.1	14.4	34.8	2,461	719	1,742	5,008
	2014-2015	52.2	13.5	38.7	2,464	638	1,826	4,722
	2013-2014	50.4	13.1	37.4	2,396	621	1,775	4,752
	2012-2013	54.1	12.8	41.3	2,571	609	1,962	4,749
	2011-2012	57.9	12.3	45.6	2,743	584	2,159	4,739
Canada	2015-2016	47.1	11.3	35.9	1,794,396	428,304	1,366,092	3,806,318
	2014-2015	47.3	10.8	36.5	1,796,318	409,294	1,387,024	3,799,658
	2013-2014 <sup>7</sup>							
	2012-2013	47.1	9.9	37.2	1,790,106	377,838	1,412,267	3,801,333
	2011-2012	47.3	9.5	37.7	1,800,592	363,316	1,437,276	3,808,503

1. Includes all French immersion and core French programs
2. Includes Early, Middle and Late French immersion program
3. Includes Regular, Extended, and Expanded Core French, Intensive French, Post-Intensive French, and Enriched French programs
4. NS 2013-2014 data not available
5. French Immersion not offered in NU
6. SK Ministry revised statistics for the 2007-2008 to 2012-2013 school years
7. National 2013-2014 totals cannot be calculated due to missing data.

# 2015-2016 FRENCH IMMERSION BY PROVINCE/TERRITORY AND GRADE<sup>1</sup>

Source: Ministries of Education

GRADE	AB	BC	MB	NB	NL	NS	NT	NU <sup>2</sup>	ON	PE	QC	SK	YK	CANADA
JK									8,819			81		8,900
SK	4,627	4,833	2,584		749	1143	99		16,874	428		1,691	83	33,111
1	4,988	4,989	2,663		814	1044	109		25,840	404	3,360	1,684	70	45,965
2	4,631	4,687	2,613		748	1040	90		22,890	364	3,348	1,612	67	42,090
3	4,207	4,257	2,449	2,120	624	858	83		20,929	308	3,360	1,398	60	40,653
4	3,660	4,056	2,259	1,867	556	956	83		20,697	342	3,352	1,230	55	39,113
5	3,236	3,590	2,022	1,765	550	861	66		19,348	270	3,201	1,110	53	36,072
6	2,922	3,433	1,816	2,371	508	868	44		17,828	306	3,324	995	64	34,479
7	3,220	3,215	1,707	2,286	1,072	2183	84		15,965	544	2,275	970	57	33,578
8	2,929	3,956	1,533	2,131	1,106	1710	54		14,192	437	2,175	807	47	31,077
9	2,589	3,508	1,358	2,040	1,032	1516	45		9,444	421	2,103	640	55	24,751
10	2,022	3,134	1,266	1,850	855	1075	31		8,072	377	2,261	593	29	21,565
11	1,866	2,860	1,050	1,679	880	947	25		6,507	329	2,339	561	45	19,088
12	1,541	2,614	1,061	1,601	692	811	20		5,309	276		496	34	14,455
OTHER <sup>3</sup>		318			-	4								322
<b>TOTAL</b>	42,438	49,450	24,381	19,710	10,186	15016	833		212,714	4,806	31,098	13,868	719	425,219
<b>TOTAL ENROLMENT</b>	691,648	553,377	185,389	97,912	66,800	118,152	8,367		1,993,432	19,691	n/a	176,301	5,370	n/a
<b>FSL AS % OF TE</b>	6.1	9.5	13.2	20.1	15.2	12.7	10.0		10.7	24.4	n/a	7.9	13.4	n/a
<b>ELIGIBLE ENROL.</b>	627,173	547,844	179,659	69,049	66,455	112,686	8,153		1,889,940	18,842	97,277	174,698	5,008	3,796,784
<b>FSL AS % OF EE</b>	6.8	9.6	13.6	28.5	15.3	13.3	10.2		11.3	25.5	32.0	7.9	14.4	11.2

1. Includes Early, Middle and Late French Immersion
2. French Immersion not offered in Nunavut
3. Students enrolled in ungraded classes.

# 2015-2016 CORE FRENCH BY PROVINCE/TERRITORY AND GRADE<sup>1</sup>

Source: Ministries of Education

GRADE	AB	BC	MB	NB	NL	NS	NT	NU	ON	PE	QC	SK	YK	CANADA
JK									7,302		957			8,259
SK	273	654	941	4,868	252		49		4,697		7,513		54	19,301
1	1,883	634	3,084	4,999	307		177		27,542		4,605	2,633	47	45,911
2	1,988	671	3,286	5,088	406		159		29,007		4,696	2,720	80	48,101
3	2,669	710	3,865	2,928	641	7	208		30,154		4,628	2,939	61	48,810
4	28,619	6,497	8,446	2,988	4,025	6812	207	34	107,411	1034	4,545	4,385	275	175,278
5	29,350	32,662	8,885	3,095	4,199	7021	185	26	107,148	1108	4,452	4,937	277	203,345
6	28,335	31,352	8,819	2,664	4,202	7280	198	29	109,694	1271	4,507	5,160	244	203,755
7	17,271	31,165	7,765	2,777	3,771	7143	156	13	110,625	945	5,855	5,114	255	192,855
8	11,826	28,239	7,783	2,989	3,814	6453	161	10	111,540	907	5,663	5,283	215	184,883
9	9,983	15,339	2,223	3,259	3,889	6858	97	4	75,943	875	6,362	1,357	103	126,292
10	4,444	11,969	1,478	3,469	2,250	1461	52	15	22,285	152	6,224	1,010	65	54,874
11	2,982	9,261	731	698	1,385	701	28	14	14,178	92	6,172	571	61	36,874
12	1,905	3,807	467	529	962	416	28	2	9,029	30		314	5	17,494
OTHER <sup>2</sup>		53		-	-	7								60
TOTAL	141,528	173,013	57,773	40,351	30,103	44,159	1,705	147	766,555	6,414	66,179	36,423	1,742	1,366,092
TOTAL ENROLMENT	691,648	553,377	185,389	98,906	66,800	118,152	8,367	8,688	1,992,408	19,691	n/a	176,301	5,370	n/a
FSL AS % OF TE	20.5	31.3	31.2	40.8	45.1	37.4	20.4	1.7	38.5	32.6	n/a	20.7	32.4	n/a
ELIGIBLE ENROL.	627,173	547,844	179,659	69,972	66,455	112,686	8,153	8,611	1,889,940	18,842	97,277	174,698	5,008	3,806,318
FSL AS % OF EE	22.6	31.6	32.2	57.7	45.3	39.2	20.9	1.7	40.6	34.0	68.0	20.8	34.8	35.9

1. Includes Intensive & Post-Intensive French, Extended French, Expanded French
2. Students enrolled in ungraded classes.