

How To Use Social Hour

Meeting Event Links:

Day 1 - Friday, August 19th, 2022: <https://cpf.socialhour.com/leaders-networking-event-day-1-august-19-2022-gg0fmv0mfxr>

Day 2 - Saturday, August 20th, 2022: <https://cpf.socialhour.com/cpf-leaders-networking-event-day-2-m2gd0bvccj8>

To access Social Hour, please visit event link (specific link for each day).





CPF Leaders' Networking Event - Day 1

Aug 19, 2022, 9:15AM EDT

Sign in to enter event

 Sign in with Google

 Sign in with Microsoft

 Sign in with LinkedIn

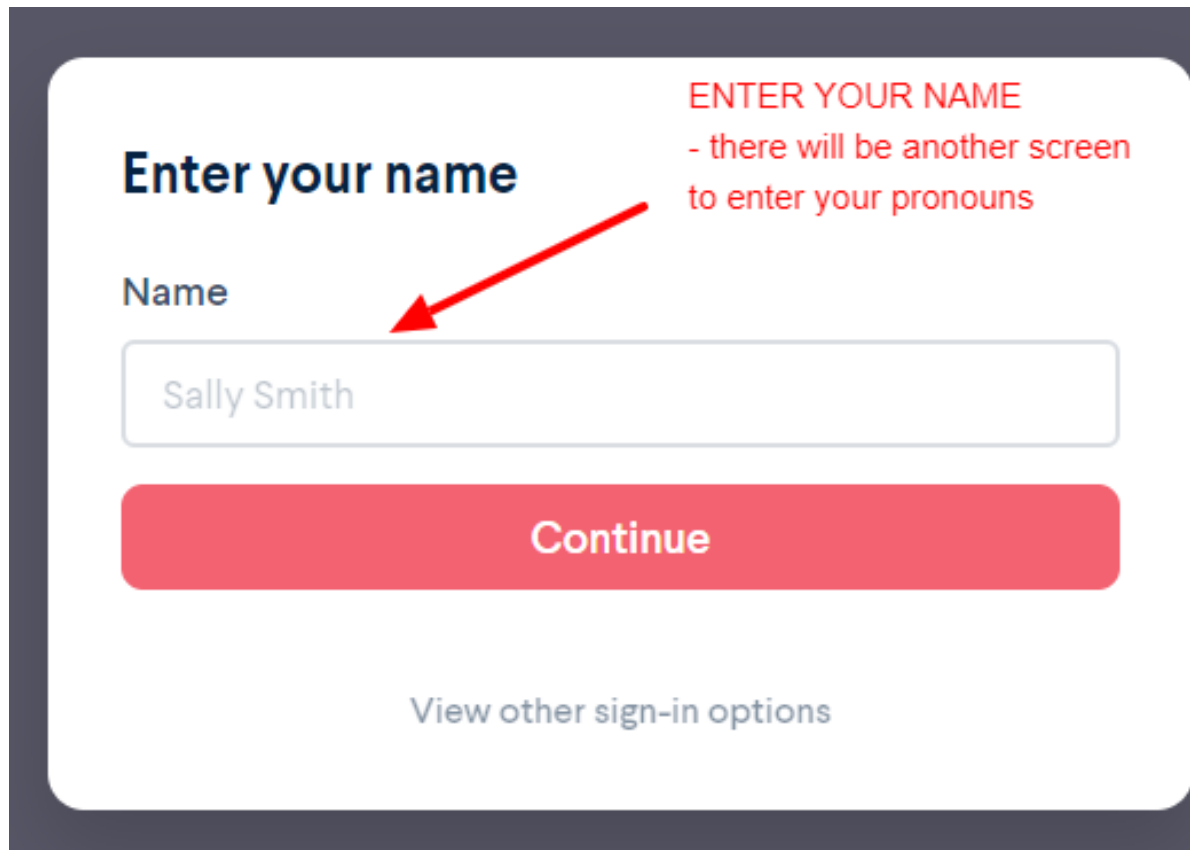
 Sign in via email

Continue without signing in

By continuing you agree to our [terms of service](#) and [privacy policy](#).

CLICK HERE TO PROCEED
WITHOUT SIGNING IN

After clicking on Continue Without Signing in, please proceed to the next screen where you will be prompted to enter your name. **Please note, there will be an additional place to enter your pronouns.**



The screenshot shows a user interface for entering a name. It features a title 'Enter your name' in bold dark blue text. Below the title is a label 'Name' in dark blue. Underneath the label is a text input field with a light gray border and rounded corners, containing the text 'Sally Smith'. A red arrow points from the text 'ENTER YOUR NAME - there will be another screen to enter your pronouns' to the input field. Below the input field is a large red button with the word 'Continue' in white. At the bottom of the form is a link 'View other sign-in options' in a smaller, gray font.

Enter your name

Name

Sally Smith

Continue

[View other sign-in options](#)

ENTER YOUR NAME
- there will be another screen
to enter your pronouns

After clicking continue, you will be prompted to enter additional information:

The screenshot shows a modal window titled "Introduce yourself to everyone" with a close button (X) in the top right corner. Below the title is the instruction "Fill out your profile for others to see". The profile section includes a square avatar placeholder with the initials "JM" and a pencil icon for editing. Below the avatar is the name "Jon MacDougall". Underneath the name are three input fields: "Preferred Pronouns:" with a book icon, "CPF Chapter/Branch:" with a lightbulb icon, and "Email address:" with a speech bubble icon. A red arrow points from the text "ENTER ADDITIONAL INFORMATION IF COMFORTABLE" to the "Preferred Pronouns:" field. Another red arrow points from the text "CLICK TO SUBMIT PROFILE" to the "Email address:" field. At the bottom of the modal is a large red button labeled "Save profile". A red arrow points from the text "CLICK TO SUBMIT PROFILE" to this button. The entire modal is set against a dark background with faint, illegible text from the underlying page.

Introduce yourself to everyone X

Fill out your profile for others to see

JM

Jon MacDougall

Preferred Pronouns:

CPF Chapter/Branch:

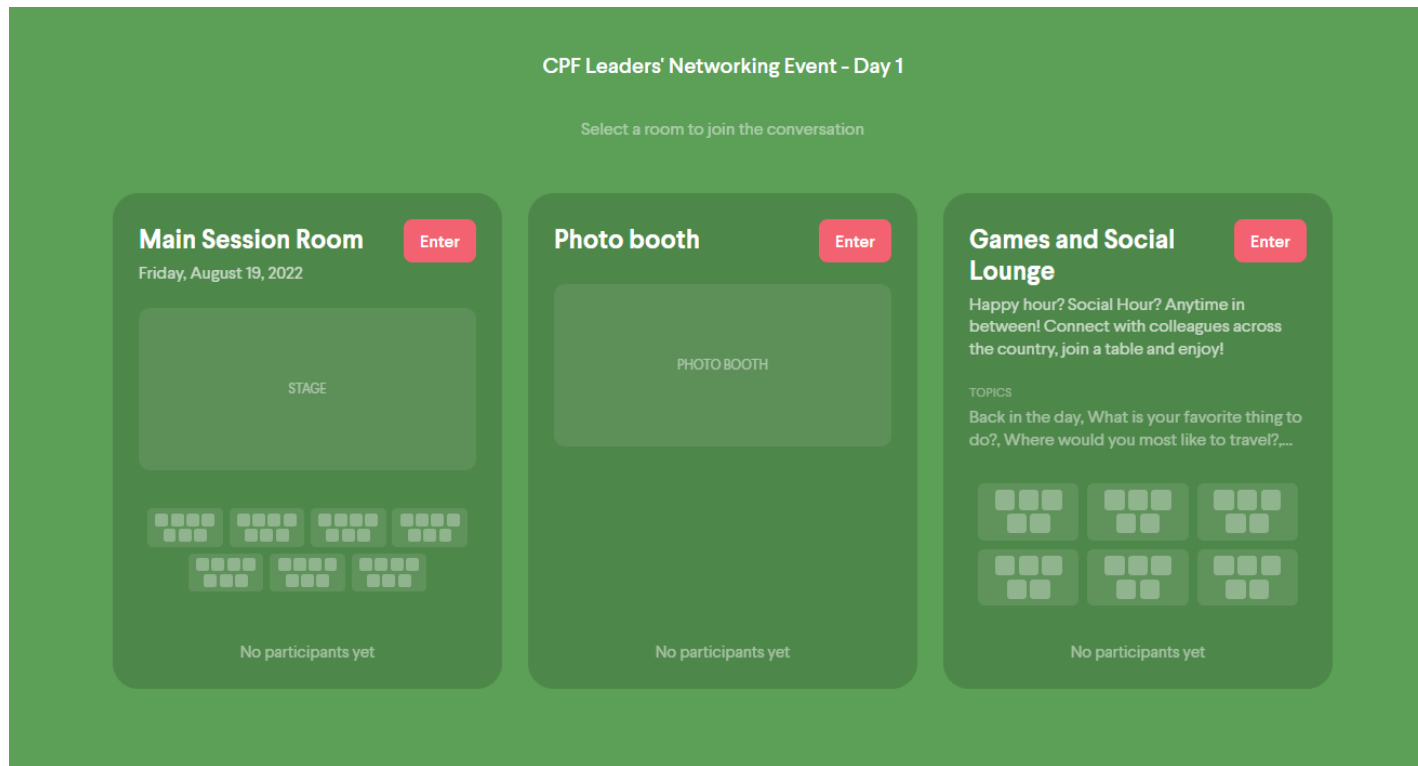
Email address:

ENTER ADDITIONAL INFORMATION IF COMFORTABLE

CLICK TO SUBMIT PROFILE

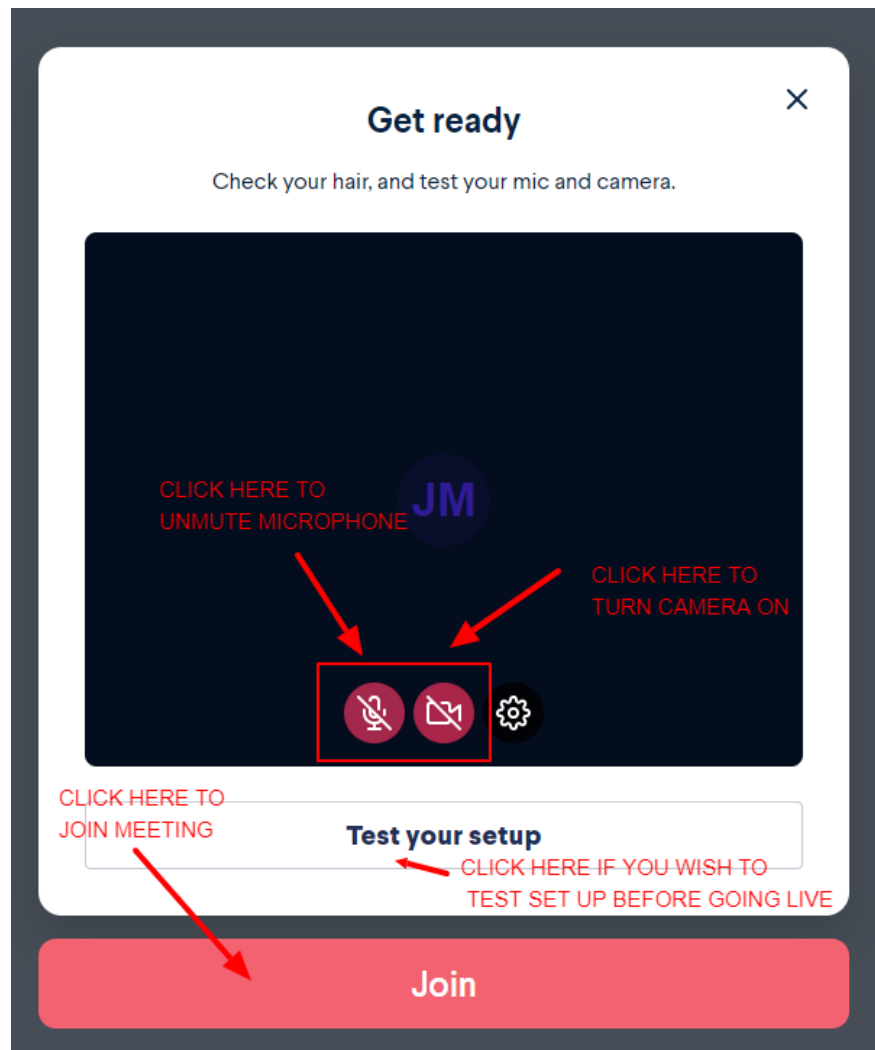
Save profile

You will then enter the lobby for the event; please choose Main Session Room and join your assigned table.

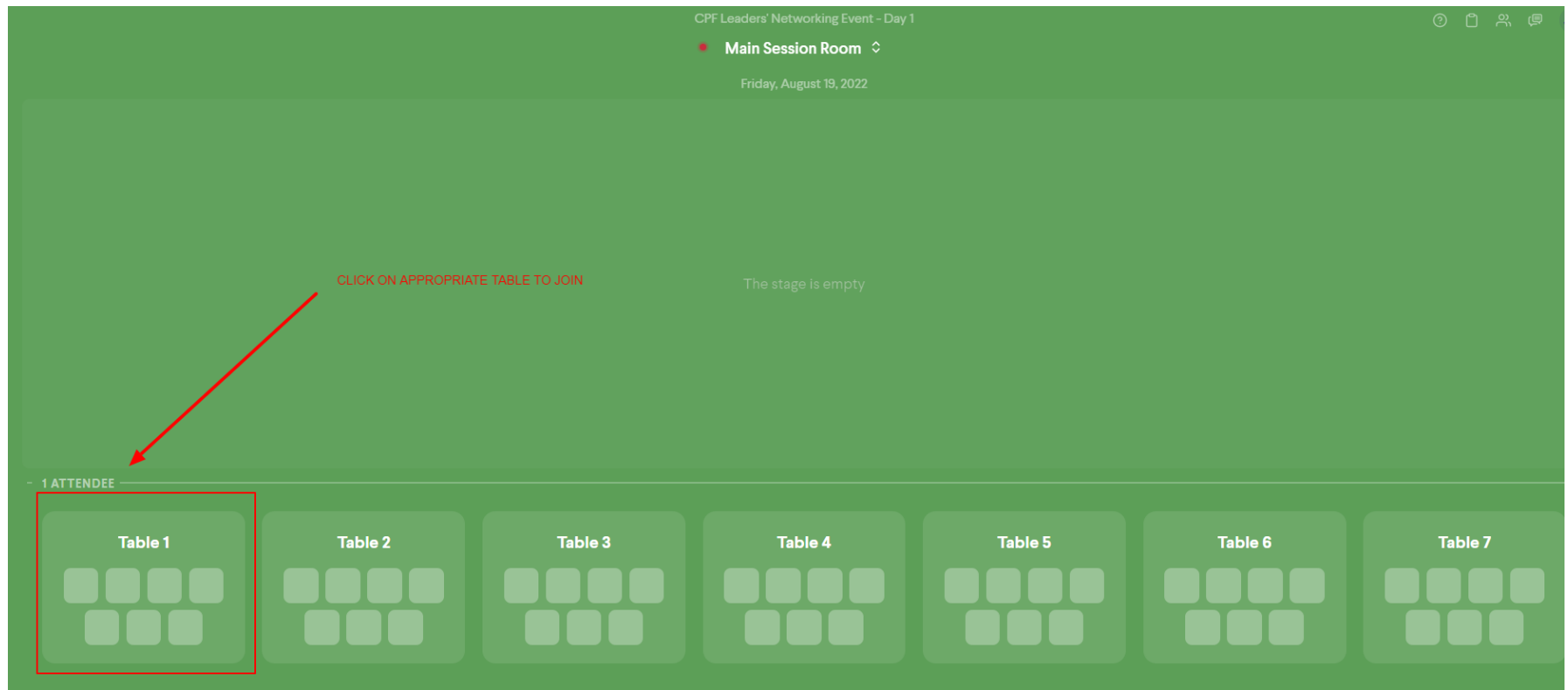


In between sessions, join the Photo Booth and take a picture that we can share on social media. Or visit the Games and Social Lounge to complete puzzles, word games, or chat with colleagues from across the CPF Network.

After clicking to enter the main session room; you will be prompted to test your camera.



Click on the appropriate table you wish to join. Tables will be shared with attendees prior to the start of meeting.



The stage is empty

MAIN STAGE - THIS IS WHERE THE SESSION FACILITATORS WILL BE, ALL TABLES CAN SEE FACILITATORS

ONCE YOU HAVE JOINED A TABLE, YOU CAN MUTE AND UNMUTE YOURSELF TO PARTICIPATE IN TABLE DISCUSSIONS

1 ATTENDEE



INTERACT WITH THE ROOM



Ask to join stage

Table 1



YOUR TABLE



Important notes:

- Session facilitator will be present on the main stage – all attendees at all tables will be able to hear participants on the main stage.
- You can communicate freely with the people at your table. During group discussions, only those at your table will be able to hear and see you (with your camera and microphone)
- To communicate with the entire room, you will have to press a HOLD TO UNMUTE button, and hold that button the entire time you wish to speak with someone at another table.
- To encourage full participation, we are asking those participating virtually and in person to turn on their camera at their appropriate table.